

Supplier Scorecard

Supplier: METAL PLUS, LLC



Overall Score	Rating
90-100 points	Excellent
81-89.99 points	Good
Below 81 points	Poor

% On-Time Delivery	Points
95%-100%	22
90%-94.99%	15
Below 90%	0

Fill Rate %	Points
100%	10
90%-99.99%	5
Below 90%	0

Quality Performance %	Points
98%-100%	23
92%-97.99%	15
Below 92%	0

Field Issues
-5 points each

Intangibles
Maximum Score: 15

Orders/Quotations Acknowledged	Points
100%	10
90% - 99.99%	5
Below 90%	0

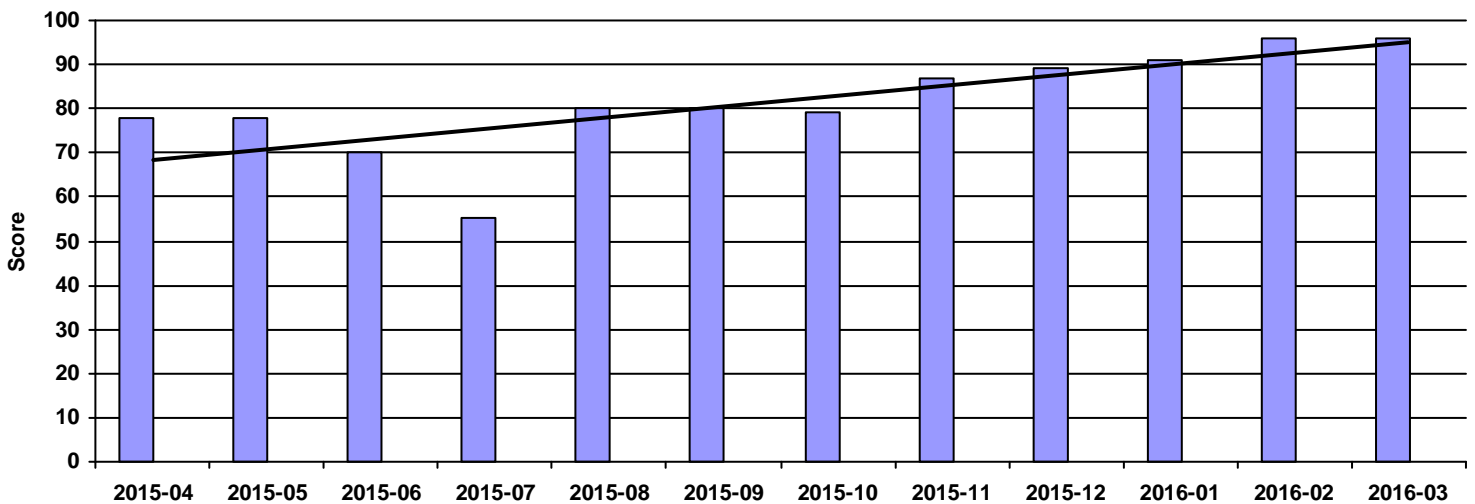
Continuous Improvement	Points
CI that directly effected DeWys	10
CI that effected supplier	8
CI meeting with purchasing team	5
NO meeting with purchasing team	0

Commercial Credit Score Class	Points
5 - High	1
4	2
3 - Medium	3
2	4
1 - Low	5

Financial Stress Score Class	Points
5 - High	1
4	2
3 - Medium	3
2	4
1 - Low	5

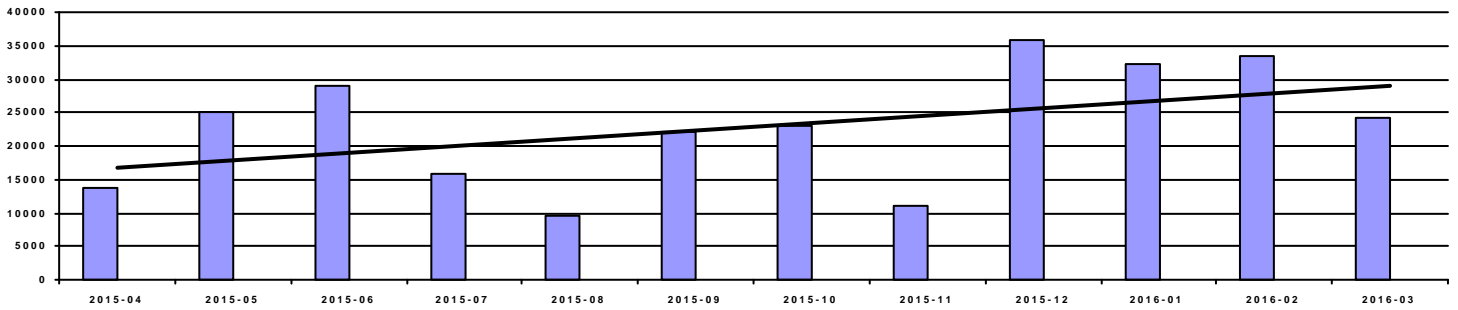
Continuous Improvement Credential	Points
Registered Quality Management System	+2
Vendor Managed Inventory	+2
Team/Person responsible for CI(full time)	+2

Overall Score



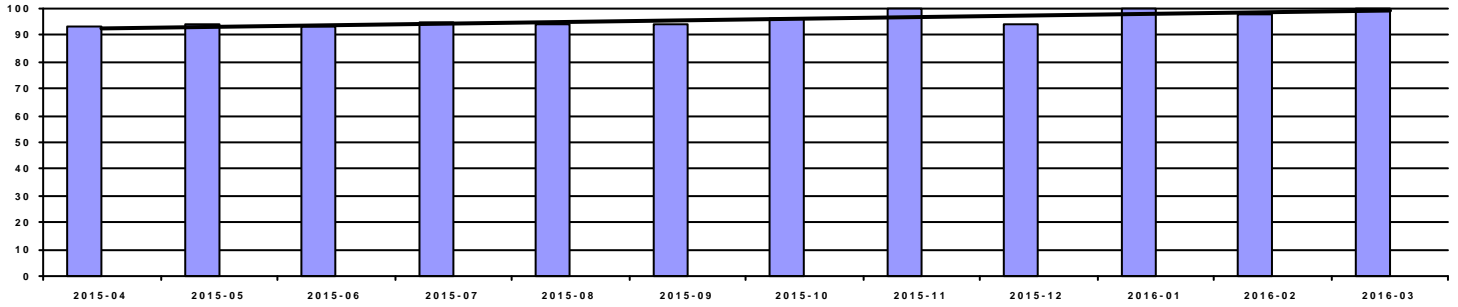
Period	2015-04	2015-05	2015-06	2015-07	2015-08	2015-09	2015-10	2015-11	2015-12	2016-01	2016-02	2016-03
Score	78	78	70	55	80	80	79	87	89	91	96	96
Rating	Poor	Poor	Poor	Poor	Poor	Poor	Poor	Good	Good	Excellent	Excellent	Excellent

Spend



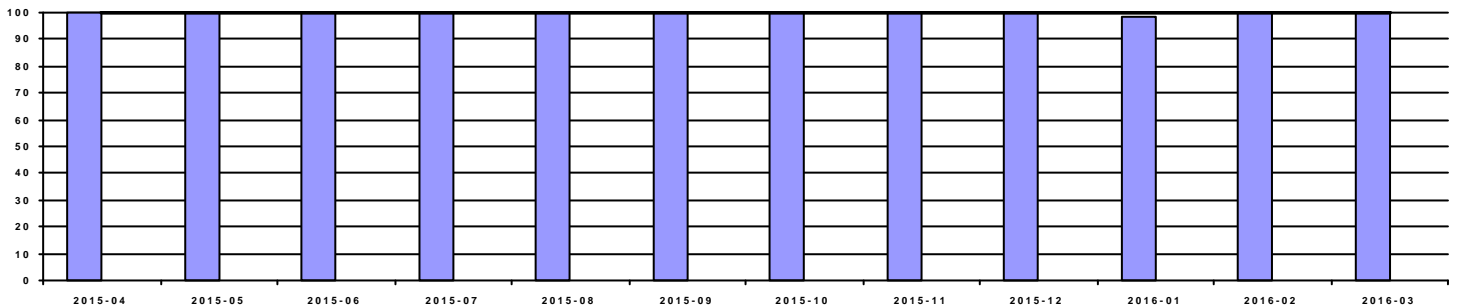
Period	2015-04	2015-05	2015-06	2015-07	2015-08	2015-09	2015-10	2015-11	2015-12	2016-01	2016-02	2016-03
Spend	13,649.58	25,149.07	28,892.75	15,758.40	9,676.25	22,015.20	22,904.36	11,052.34	35,824.12	32,196.18	33,570.78	24,274.64

OnTime Performance (22 pts)



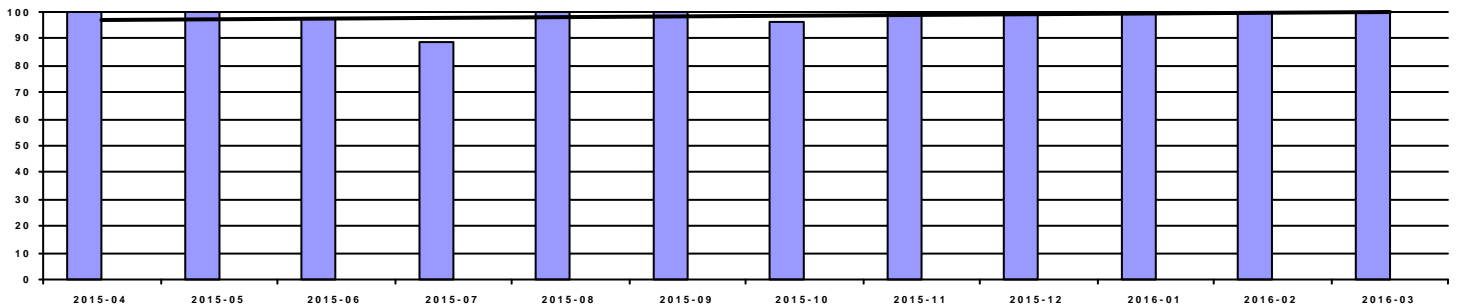
Period	2015-04	2015-05	2015-06	2015-07	2015-08	2015-09	2015-10	2015-11	2015-12	2016-01	2016-02	2016-03
OnTime	93.33%	94.12%	93.02%	94.44%	93.75%	94.12%	96.43%	100.00%	93.75%	100.00%	97.78%	100.00%
Score	15	15	15	15	15	15	22	22	15	22	22	22

Fill Rate (10 pts)



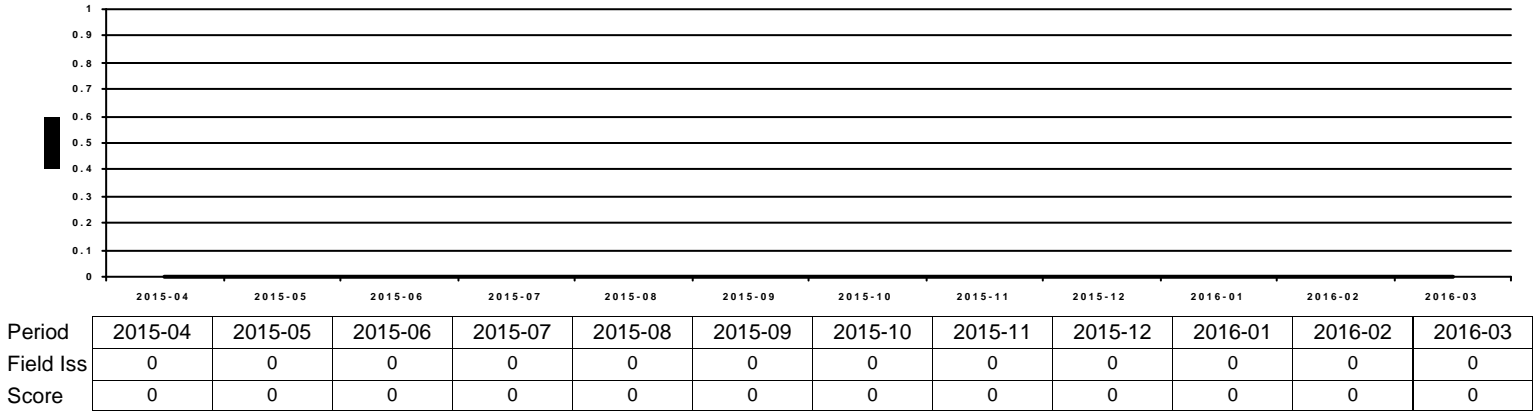
Period	2015-04	2015-05	2015-06	2015-07	2015-08	2015-09	2015-10	2015-11	2015-12	2016-01	2016-02	2016-03
Fill Rate	100.00%	100.00%	100.00%	100.00%	100.00%	100.00%	100.00%	100.00%	100.00%	98.33%	100.00%	100.00%
Score	10	10	10	10	10	10	10	10	10	5	10	10

Quality Performance (23 pts)

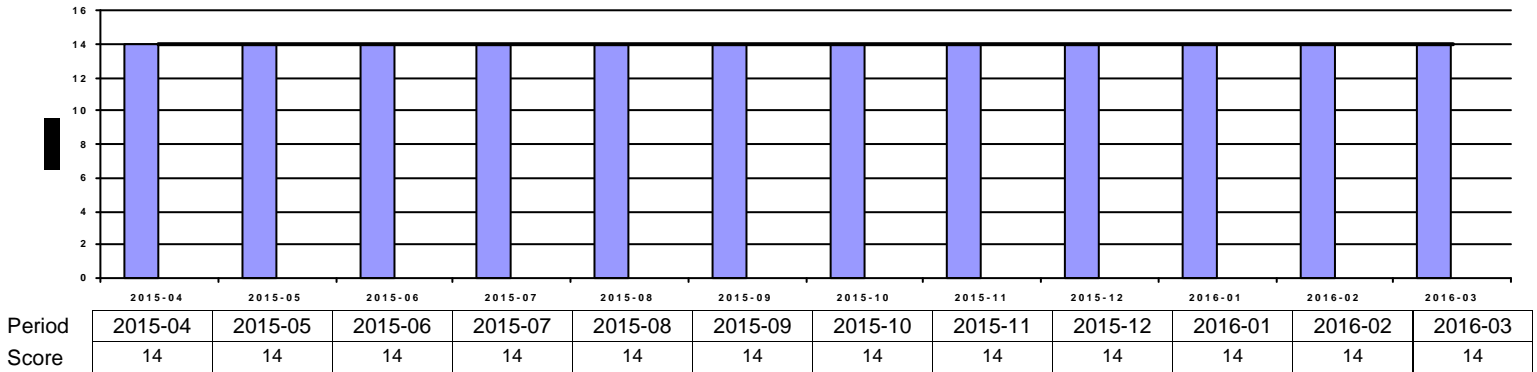


Period	2015-04	2015-05	2015-06	2015-07	2015-08	2015-09	2015-10	2015-11	2015-12	2016-01	2016-02	2016-03
Quality	100.00%	100.00%	97.67%	88.89%	100.00%	100.00%	96.43%	100.00%	100.00%	100.00%	100.00%	100.00%
Score	23	23	15	0	23	23	15	23	23	23	23	23

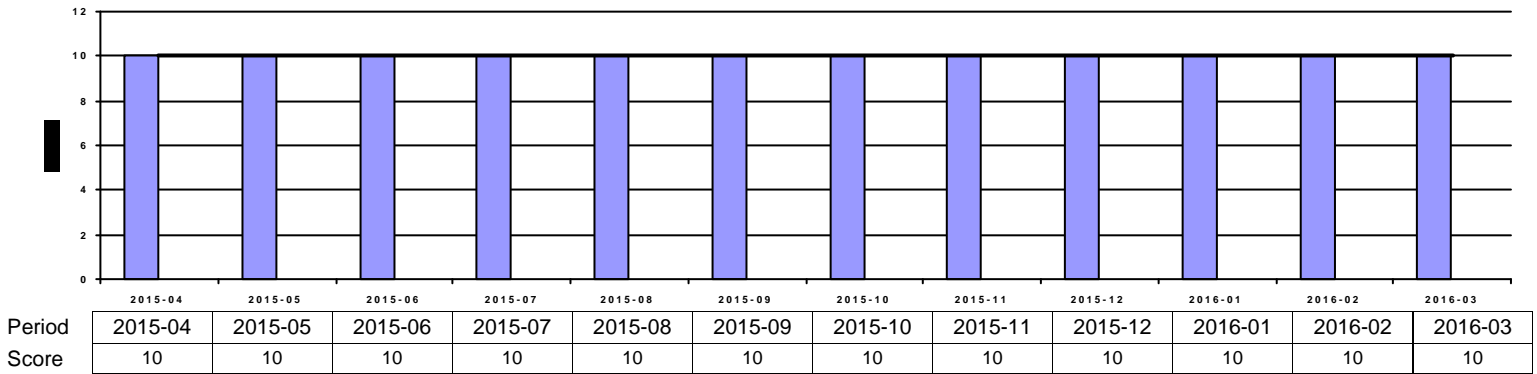
Field Issues (-5 pts each)



Intangibles (15 pts)



Acknowledgement Performance (10 pts)



Period	2015-04	2015-05	2015-06	2015-07	2015-08	2015-09	2015-10	2015-11	2015-12	2016-01	2016-02	2016-03
Cont Imp	0	0	0	0	0	0	0	0	10	10	10	10
CompCr	6	6	6	6	8	8	8	8	7	7	7	7
CI	0	0	0	0	0	0	0	0	0	0	0	0
QMS	0	0	0	0	0	0	0	0	0	0	0	0
VMI	0	0	0	0	0	0	0	0	0	0	0	0